

REGROOVING

Regrooving beyond the original pattern depth is permitted provided there is sufficient rubber left to protect the tyre casing. Before regrooving a tyre, check that the word "REGROOVABLE" is molded on the sidewall.

Note: For further information, please consult a Bridgestone technical representative or the Technical Service Section at the Bridgestone Head Office.

RECOMMENDATIONS FOR REGROOVING

INTRODUCTION

Regrooving Dayton steel radial tyres for trucks and buses will ensure longer serviceability of your tyres. Check that the word "REGROOVABLE" is molded on the tyre sidewall. If it is not, under no circumstances should regrooving be attempted.

GUIDELINES

1. Tyre must be demounted from the rim before regrooving.
2. Inspection:
 - a) Before regrooving, check to see that there is no damage on any part of the tyre i.e. tread, shoulders, sidewalls, beads and inner liner.
 - b) Remove stones which may have become embedded in the grooves, and other foreign objects such as nails from the tread. Repair if necessary.
 - c) Particular care should be exercised when selecting a tyre for regrooving if the tread area is in any way damaged, e.g. by chipping, tearing and cutting due to abnormal operating conditions.
 - d) Where a tyre has worn abnormally, it may be possible to regroove just that part of the worn tyre provided a sufficient portion of the original groove is visible before regrooving.
3. It is recommended that the minimum remaining tread depth be 3mm before regrooving. The tread depth should be measured around the circumference at four places to find the minimum remaining depth. Set the cutter blade according to the recommendations shown in this publication.
4. Please ensure that you regroove your Dayton steel radials to the patterns, depths and widths recommended in this publication to ensure the good service of your tyres.
5. After regrooving, check that your tyre is free from defects. It is most important to ensure that the belts under the tread have not been exposed.
6. As the number of profile grooves and tread design may vary depending on the dimensions, please contact your local Bridgestone customer services representative for further regrooving information.

LEGISLATION

Local legislation applies regarding the use of regrooved tyres on vehicles. Please refer to your local Bridgestone customer services representative or log on to www.bridgestone.eu and select your country of operations.

DAYTON™



DAYTON™

www.dayton.eu

BRIDGESTONE EUROPE NV/SA - Kleine Kloosterstraat 10 - 1932 Zaventem - Belgium

The information contained in this publication is for guidance purposes only. Whilst every effort has been taken in its production, no responsibility can be accepted for any loss or damage arising from any undetected error. Any data supplied is subject to possible revision following the date of publication.
Unides • DY TBR B EU - 09/16



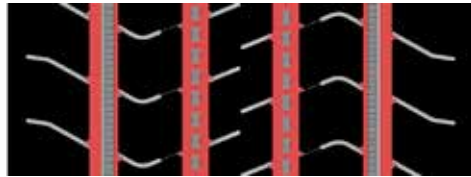
REGROOVING DATA

2016 2017

ON ROAD



Size	D	Regrooving depth (mm)	W	Regrooving width (mm)
315/80 R 22.5		1.0		7.0 - 8.0
295/80 R 22.5		1.0		7.0 - 8.0
315/70 R 22.5		1.0		7.0 - 8.0



Size	D	Regrooving depth (mm)	W	Regrooving width (mm)
315/80 R 22.5		1.0		7.0 - 8.0
295/80 R 22.5		1.0		7.0 - 8.0
315/70 R 22.5		1.0		7.0 - 8.0



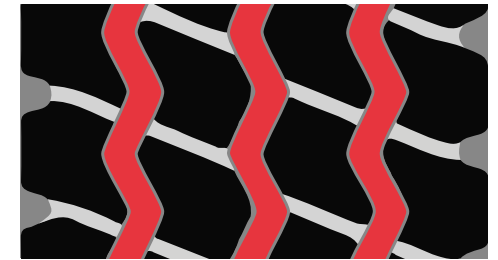
Size	D	Regrooving depth (mm)	W	Regrooving width (mm)
385/65 R 22.5		1.0		7.0 - 8.0



ON/OFF ROAD



Size	D	Regrooving depth (mm)	W	Regrooving width (mm)
315/80 R 22.5		2.0		8.0
13 R 22.5		2.0		8.0



Size	D	Regrooving depth (mm)	W	Regrooving width (mm)
315/80 R 22.5		2.0		8.0
13 R 22.5		2.0		8.0

